



Submittal Sheet

**Gas Fired Boilers
Residential and Commercial Models
WBR and WBC Models**

Gas Fired Residential and Commercial Boiler

JOB NAME:

LOCATION:

ARCH. / ENGR.:

WHOLESALE:

MECH. CONTRACTOR:

MODEL NUMBER:

TYPE OF GAS:

BTU/HR INPUT LOW – HIGH FIRE:

NOTES:

Heat Exchanger

- All Stainless Steel ASME “H” Stamped Construction
- National Board listed
- Low pressure drop, gasketless, vertical tube combustion heat exchanger design – provides maintenance-free operation on internal buildup of material inside the combustion chamber
- 30 PSI Relief Valve, 55 – 199 models
- 80 PSI Relief Valve, 285 and 399 models

Combustion System

- Modulating burner with up to 5 to 1 turndown
- Up to 96.3% AFUE
- High Grade Burner Design
- Spark Ignition
- Models Available for Natural or LP Gas
- Dual Flame monitoring (Spark and Flame probe)

Integrated Control System

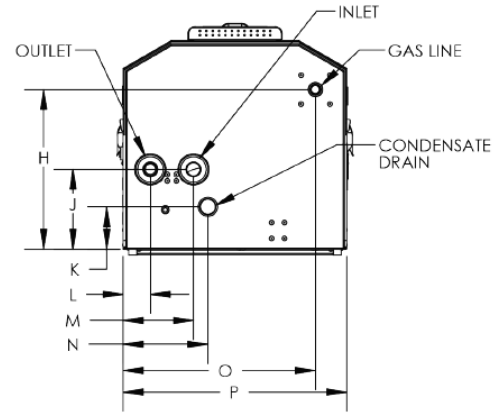
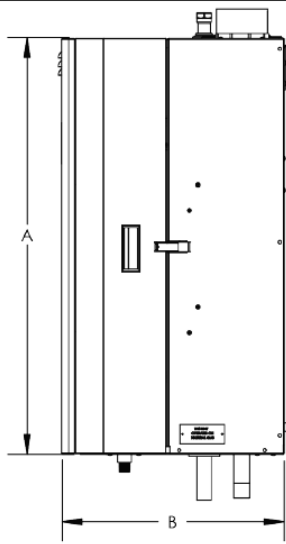
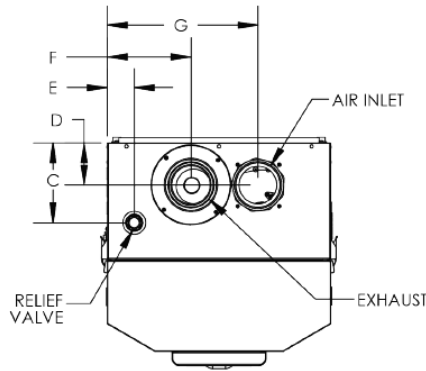
- Digital operating control with 2 line / 20 character LCD text display to program and monitor boiler operation
- Three boiler set point temperature inputs– Boiler Pump – System Pump – DHW Pump / Domestic Hot Water priority with timing
- Programmable settings: Outdoor Reset Curve – DHW Supply Set Point – Step Sequence for delayed response for smart zones – Boost Response - Cascade up to 8 boilers
- Field Connection Board – Line voltage terminal strip with 120 VAC / 60 Hertz power / low voltage terminal strip with multiple contacts - Cascade wiring CAT 5 / CAT 3
- 24 Volt monitoring
- 0-10 VDC input for Building Management System
- Boiler output regulation (Adjustment of boiler output down to 50 percent of rated capacity)
- Low water protection device
- Password Security - Flashing maintenance indicator with optional programmed installer contact information
- Time Clock / Data logging – Last 10 fault codes with date and time
- Customized freeze protection parameters
- Modbus enable through external adapter to monitor or control boiler through BMS system

Additional Features

- Superior condensate collection system with overflow protection switch
- Vents in Plastic PVC - CPVC - Stainless Steel – ULC S636 flexible polypropylene vent liner (chimney lining only)
- Vents up to 200 combined equivalent feet
- 12 Year Limited Warranty
- Manual reset high temperature limit
- Dry contact for alarm output
- Included wall mount bracket
- Low NOx emissions – SCAQMD Certified

Optional

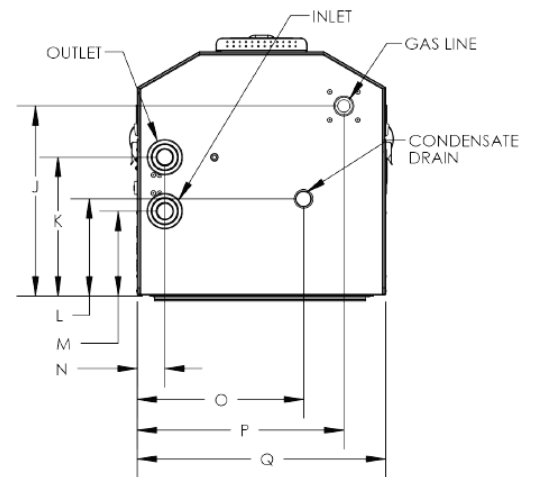
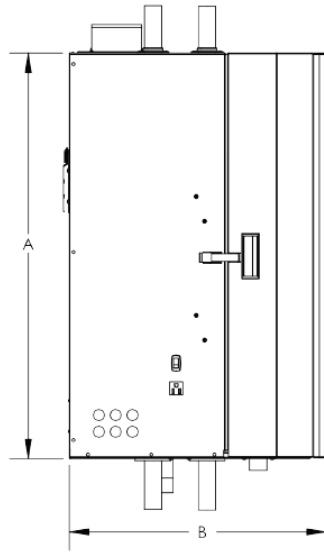
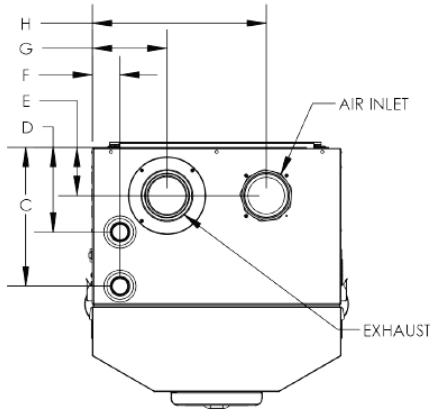
- System / Pipe Sensor (Part # 7250P-324)
- Indirect Water Heater Sensor (7250P-325)
- 3” Polypro Flex Vent Kit (8400P-001)
- 3” (80mm) PP Concentric Vent Kit (KGAVT0601CVT)
- 3” Stainless Steel Termination Vent Kit (V1000)
- 4” Stainless Steel Termination Vent Kit (V2000)
- Flow Switch (7450P-213)
- Condensate Neutralizer (7450P-212)
- U.L. 353 Compliant Low Water Cut-Off Interface Kit w/ Manual Reset (7600P-104 for 55 – 110 models, 7600P-990 for 155 – 399 models)
- Alarm System (7350P-602) to monitor any failure
- PC Connection Cable w / Software (7250P-738)
- MODBUS / BACnet (7350P-636)



MODEL	MAX. MBH	MIN. MBH	AFUE	HEATING CAPACITY MBH	A	B	C	D	E	F	G	H	J	K	L	M	N	O	P
055	55	11	96.3	51	32-1/2"	17-3/8"	6-1/4"	3-1/2"	2-1/4"	6-1/2"	11-3/4"	12-1/2"	6-1/4"	3-1/2"	2"	5-1/2"	6-1/2"	15"	17-1/2"
080	80	17	96.0	79															
110	110	22	95.6	102															

MODEL	GAS CONNECTION	WATER CONNECTION	AIR INLET	VENT SIZE	PSI RATING	SHIPPING WT. (LBS)
055	3/4"	1"	3"	3"	30 PSI	125
080						128
110						130

LP-387-K
07/12/13



MODEL	MAX MBH	MIN MBH	AFUE	HEATING CAP. MBH	A	B	C	D	E	F	G	H	J	K	L	M	N	O	P	Q
155	155	31	95.1	142	32-5/8"	20-5/8"	11-1/8"	6-7/8"	3-7/8"	2-1/4"	6"	14"	15-1/4"	11-1/8"	7-3/4"	6-7/8"	2-1/4"	13-3/8"	16-5/8"	20"
199	199	40	95.3	183																
285	285	57	95.0	262																
399	399	80	93.2*	367	36-3/8"	23-5/8"	13-5/8"	8-1/2"	4-3/4"	2-3/4"	7-3/8"	18-1/8"	18-3/4"	13-5/8"	9-3/4"	8-1/2"	2-3/4"	16-1/2"	19-1/4"	25-1/2"

* THERMAL EFFICIENCY (NOT AFUE)
ALL DIMENSIONS ARE APPROXIMATE

MODEL	GAS CONNECTION	WATER CONNECTION	AIR INLET	VENT SIZE	PSI RATING	SHIPPING WT. (LBS)
155	3/4"	1-1/4"	3"	3"	30 PSI	195
199						198
285						203
399	1"	1-1/2"	4"	4"	80 PSI	298

LP-387-K2
07/12/13

NOTE: Westinghouse reserves the right to make product changes or updates without notice and will not be held liable for typographical errors in literature.