



Submittal Sheet for Residential Electric Water Heaters

JOB NAME:

LOCATION:

ARCH./ENGR.:

WHOLESALER:

MECH. CONTRACTOR:

MODEL NUMBER:

ELECTRICAL SPECIFICATIONS:

NOTES:

Residential Models

- Available in 40 and 52 gallon capacities
- Standard Voltage and Phase: 240V, Single Phase, Non-Simultaneous Operation

Construction

- 316L Stainless Steel Tank construction tolerates high temperatures and offers superior corrosion resistance
- Super-Insulated for minimal heat loss and energy efficiency
- Top hot water outlet draws the hottest water from the tank
- Outer jacket offers attractive stainless steel appearance
- Water connections on the top of the water heater ease installation
- Cold water connection with dip tube directs cold water to the bottom of the tank, minimizing the mixing of cold and heated water
- Hot and cold feed connections with built-in heat traps provide great efficiency
- Electric Junction Box located on top of heater for easy wiring and installation

Certifications and Ratings Efficiency

- Meets or exceeds ANSI requirements and have been tested according to DOE procedures
- Meets or exceeds the energy efficiency requirements of NAECA, ASHRAE standard 90, ICE code and all state energy performance criteria
- Exceeds energy efficiency codes of all states, including California Energy Commission (CEC)

Electric Elements / Thermostat

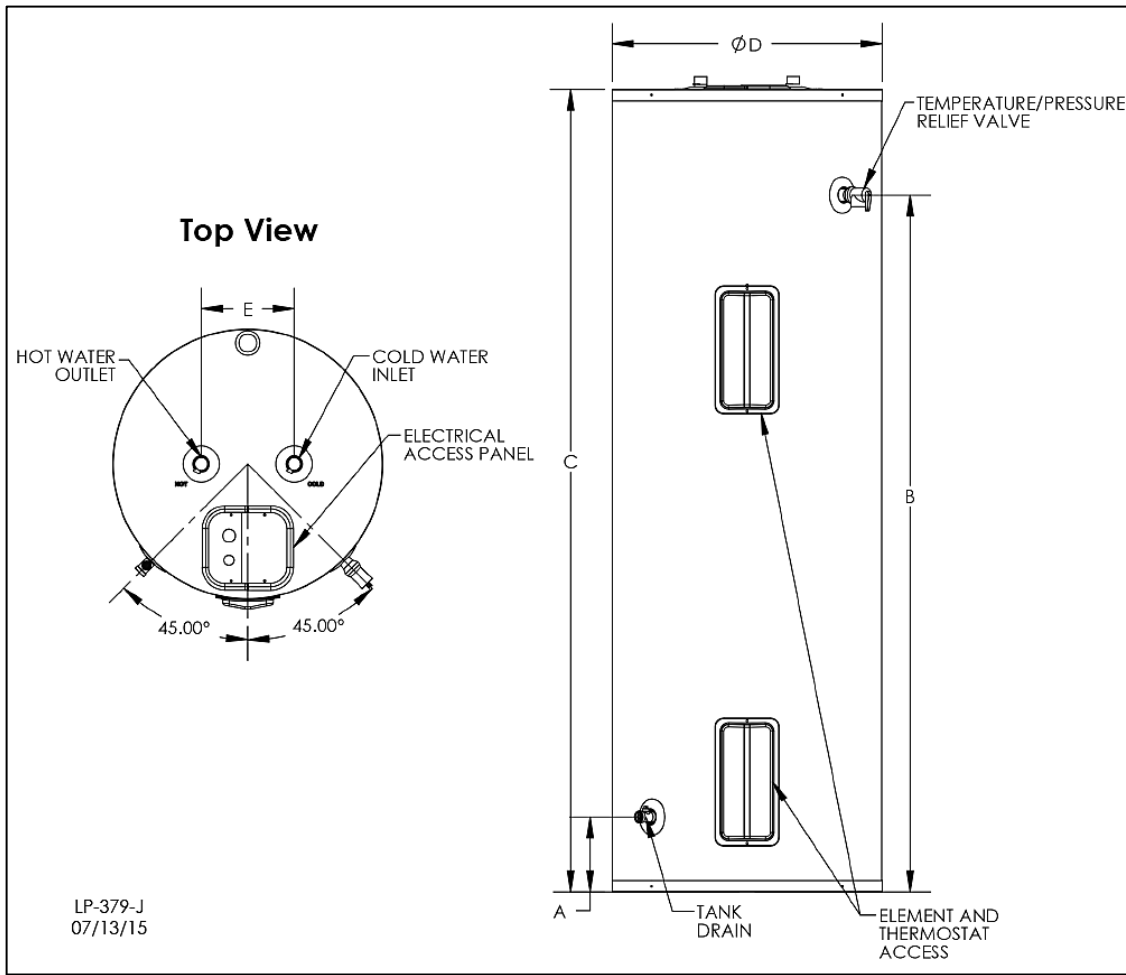
- Stainless Steel incoloy electric elements with a stainless steel screw base – reduces the chance of element burnout and provides longer service life versus conventional elements
- Direct Immersion Elements allow maximum recovery efficiency and direct, efficient heat transfer
- Adjustable surface mounted thermostat provides years of reliable, trouble-free service at the desired water temperature
- Factory Installed Wiring eliminates the need for splicing and taping wires
- Fully automatic high limit controls provide adequate temperature control and overheat protection – manual reset cutoff

Safety and Construction

- ETL Design Certified to meet UL Standard 174 for Household Electric Water Heaters
- North Carolina code compliant
- Lead Free Compliant, as required by the Safe Drinking Water Act, Section 1417

Additional Features

- Extended Limited Warranty if registered online – extends coverage on component parts and against inner tank leakage from the date of installation
- Included ASME rated Temperature and Pressure Relief Valve
- Included Brass Drain Valve



SPECIFICATIONS AND DIMENSIONS								WATER TEMPERATURE RATINGS			
RESIDENTIAL MODELS	STORAGE CAP. (GAL)	A	B	C	D	E	HOT / COLD INLETS	SHIPPING WEIGHT (LBS EST.)	MIN. DELIVERED TEMP.	MAX. DEL. TEMP.	HIGH TEMP. LIMIT
		(Inches)									
WER040C2X***	40	5 ¾	46	54 ¼	19 ½	8	¾" NPT	104	110°F (43.3 C)	150°F (65.5 C)	170°F (76.6 C)
WER052C2X***	52		58 ¼	66 ¾				118			

MODELS	# ELEMENTS AND THERMOSTATS	AVAILABLE WATTAGE	VOLTAGE	FULL LOAD CURRENT IN AMPS
				Single Phase
WER***C2X030	2	3,000	240	13
WER***C2X045		4,500		19
WER***C2X055		5,500		23

Elements and Corresponding Voltages / Wattages / Amperages

Recovery Table for Commercial Electric Water Heater (US Gallons per Hour)												
Input		Temperature Rises (deg. F)										
W	BTU	40	50	60	70	80	90	100	110	120	130	140
3000	10236	30	24	20	17	15	13	12	11	10	9	9
4500	15355	46	36	30	26	23	20	18	16	15	14	13
5500	18767	56	44	37	31	28	24	22	20	18	17	16