



**Guide Submittal Sheet**

**Commercial Gas-Fired Water Heaters**

*WGC\*\*\*NG^^^ Models*

*\*\*\* Denotes Gallon Size (055, 080, 119)*

*“M” Denotes Multi-Fit Models*

*^^^ Denotes kBTU Capacity (055, 080, 119)*

**JOB NAME:**

**LOCATION:**

**ARCH./ENGR.:**

**WHOLESALE:**

**MECH. CONTRACTOR:**

**MODEL NUMBER:**

**TYPE OF GAS:**

**BTU/HR INPUT LOW – HIGH FIRE:**

**NOTES:**

All Models

High Efficiency Heat Exchanger

- Copper Nickel primary with 800 H and Copper Nickel secondary tube construction
- Gasketless heat exchanger design

Combustion System

- Modulating burner with up to 5 to 1 turndown
- 96% thermal efficiency
- High-Grade Inconel premix burner
- Spark ignition
- Fires on Natural or LP Gas with included conversion kit
- Dual flame monitoring (Spark and Flame probe)
- Flame stabilization monitoring – Automatic adjustment of firing rate to stabilize flame signal

Integrated Control System

- Digital operating control with LCD display three character for temperature and system monitor - LCD indicators for appliance faults (red light) and operation (green light)
- System parameters password protected
- Outdoor reset
- 120 volt 5 amp electrical connection for condensate pump
- 0-10 volt input for Building Management System
- Dry contact for alarm output
- Outdoor sensor input
- Computer monitor cable allows user to monitor system parameters – fault history – graphical monitor of system operation

Stainless Steel Tank

- Tank construction of 316 L stainless steel
- System return tube with screen for built-in dirt and air separation
- High Temperature Switch
- 1” system return and supply connection for 55 gallon models
- 1 ½” system return and supply connection for 80 and 119 gallon models
- Pressure relief port
- Top and bottom sensor
- Built-in low water cut-off probe

Specialized Features

Standard Models

- Offer auxiliary ports for additional applications, including heating through an air handler

Multi-Fit Models

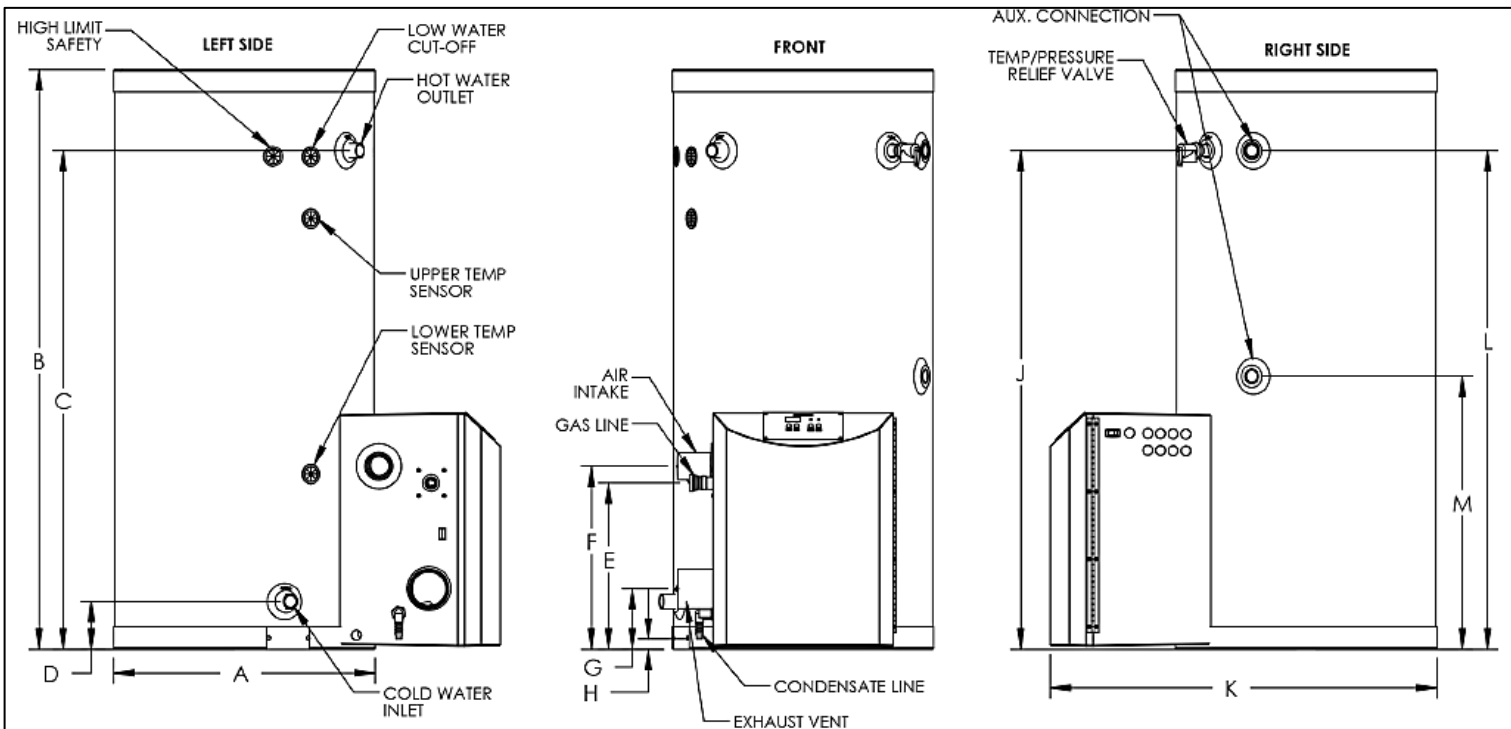
- Additional top connections and shorter height increase installation flexibility
- 1 ½” system return and supply connections

Additional Features

- Vents in PVC - CPVC - stainless steel – ULC S636 flexible polypropylene vent liner (chimney lining only)
- Built –in condensation system
- Manual reset high limit
- NSF Listed
- Low NOx emissions – SCAQMD Certified
- Lead Free Compliant, as required by the Safe Drinking Water Act, Section 1417

Optional Equipment

- Outdoor Sensor (Part # 7250P-319)
- 2” PVC Concentric Vent Kit (Part # KGAVT0501CVT)
- 3” PVC Concentric Vent Kit (Part # KGAVT0601CVT)
- 2” Stainless Steel Termination Vent Kit (Part # V500)
- 3” Stainless Steel Termination Vent Kit (Part # V1000)
- 4” Stainless Steel Termination Vent Kit (Part # V3000)
- Condensate Neutralizer (Part # 7450P-212)
- PC Connection Cable w / Software (Part # 7250P-738)



### WATER HEATER AND SANITIZER BOOSTER DIMENSIONS

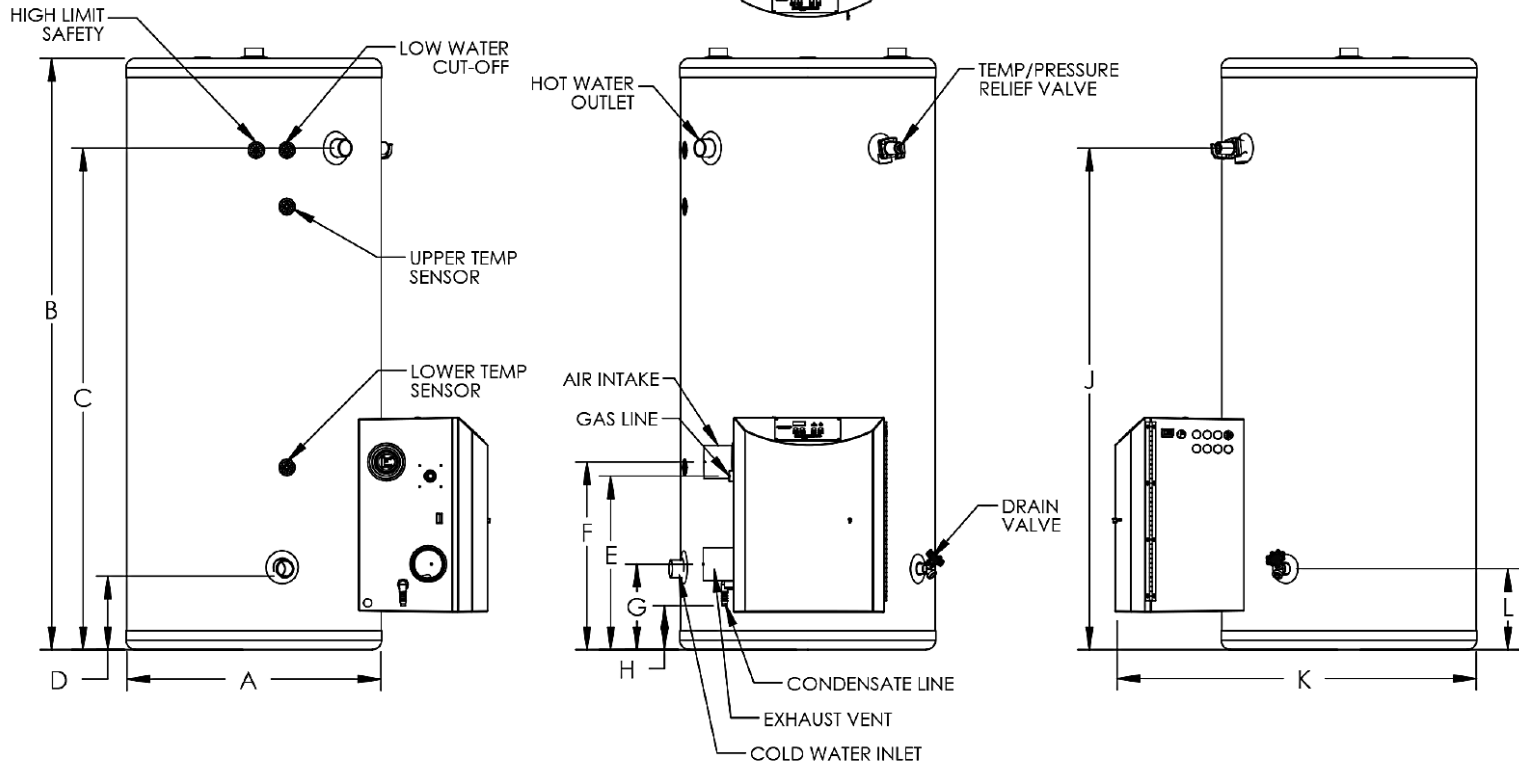
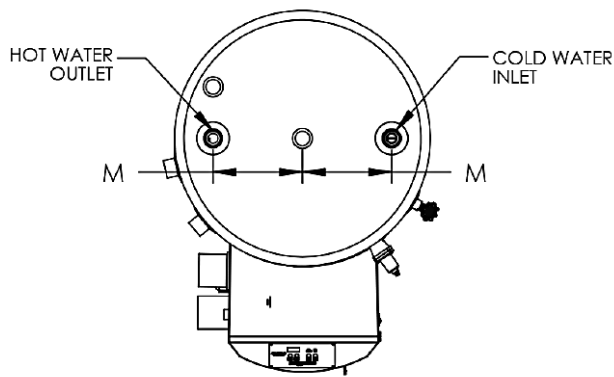
	GAL.	A	B	C	D	E	F	G	H	J	K	L	M
55 Gallon Models	55	23"	52"	45"	5"	14-3/4"	16-1/4"	5-1/4"	1"	45"	34-1/4"	45"	27-1/2"
80 Gallon Models	80	23"	72"	64"	5-3/4"	17"	18-1/2"	7-3/4"	3-1/4"	64"	34-1/4"	64"	29-3/4"
119 Gallon Models	119	27"	74"	66-1/4"	7-1/2"	18-3/4"	21-1/2"	10-1/2"	5"	66-1/2"	38-1/2"	66-1/2"	31"

### WATER HEATER SPECIFICATIONS

	INPUT MODULATION	AIR INTAKE/ EXHAUST VENT SIZE	INLET/ OUTLET SIZE	AUXILIARY CONN.	GAS LINE CONN.	SYSTEM RELIEF PIPE SIZE	SHIPPING WEIGHT	MAX. TEMPERATURE LIMIT
55 Gallon Models	35,000 - 100,000	2"	1" NPT	1" FNPT	3/4"	3/4"	175 LBS.	160°
	35,000 - 130,000	2"	1" NPT	1" FNPT	3/4"	3/4"	175 LBS.	160°
	40,000 - 160,000	3"	1" NPT	1" FNPT	3/4"	3/4"	175 LBS.	160°
	40,000 - 199,000	3"	1" NPT	1" FNPT	3/4"	3/4"	175 LBS.	160°
80 Gallon Models	35,000 - 100,000	2"	1-1/2" NPT	1" FNPT	3/4"	3/4"	235 LBS.	160°
	35,000 - 130,000	2"	1-1/2" NPT	1" FNPT	3/4"	3/4"	235 LBS.	160°
	40,000 - 160,000	3"	1-1/2" NPT	1" FNPT	3/4"	3/4"	235 LBS.	160°
	40,000 - 199,000	3"	1-1/2" NPT	1" FNPT	3/4"	3/4"	235 LBS.	160°
119 Gallon Models	35,000 - 100,000	2"	1-1/2" NPT	1" FNPT	3/4"	3/4"	405 LBS.	160°
	35,000 - 130,000	2"	1-1/2" NPT	1" FNPT	3/4"	3/4"	405 LBS.	160°
	40,000 - 160,000	3"	1-1/2" NPT	1" FNPT	3/4"	3/4"	405 LBS.	160°
	40,000 - 199,000	3"	1-1/2" NPT	1" FNPT	3/4"	3/4"	405 LBS.	160°

ALL DIMENSIONS ARE APPROXIMATE, "LP" DENOTES PROPANE GAS

LP-179-B  
08/25/14



### MULTI FIT WATER HEATER

	GAL.	A	B	C	D	E	F	G	H	J	K	L	M
80 Gallon Models	80	27"	55"	46"	7-1/4"	17"	18-1/4"	8"	3"	46"	38-1/4"	7-1/4"	9-1/2"
119 Gallon Models	100	27"	63"	54"	7-1/4"	17"	18-1/4"	8"	3"	54"	38-1/4"	7-1/4"	9-1/2"

### MULTI FIT WATER HEATER SPECIFICATION

	INPUT MODULATION	AIR INTAKE/ EXHAUST VENT SIZE	INLET/ OUTLET SIZE	GAS LINE CONN.	SYSTEM RELIEF PIPE SIZE	SHIPPING WEIGHT	MAX. TEMPERATURE LIMIT
80 Gallon Models	35,000 - 130,000	2"	1-1/2" NPT	3/4"	3/4"	235 LBS	160°
	40,000 - 199,000	3"	1-1/2" NPT	3/4"	3/4"	235 LBS.	160°
119 Gallon Models	35,000 - 130,000	2"	1-1/2" NPT	3/4"	3/4"	405 LBS.	160°
	40,000 - 199,000	3"	1-1/2" NPT	3/4"	3/4"	405 LBS.	160°

ALL DIMENSIONS ARE APPROXIMATE, "LP" DENOTES PROPANE GAS

LP-179-B  
09/08/14

**PERFORMANCE SPECIFICATIONS FOR COMMERCIAL GAS FIRED WATER HEATER MODELS**

BTUH	Efficiency	Temperature Rise											
		(°F)	40	50	60	70	80	90	100	110	120	130	140
		(°C)	22	28	33	39	44	50	56	61	67	72	78
100,000	96%	<b>GPH</b>	298	240	202	173	152	136	123	110	101	94	88
		<b>GPM</b>	5	4	3.4	2.9	2.5	2.25	2	1.8	1.7	1.6	1.5
		<b>LPH</b>	1128	908	765	655	575	515	466	416	382	356	333
		<b>LPM</b>	18.8	15.1	12.75	10.9	9.6	8.6	7.8	6.9	6.4	5.9	5.6
130,000	96%	<b>GPH</b>	384	309	260	222	195	175	158	141	130	120	112
		<b>GPM</b>	6.4	5.2	4.3	3.7	3.25	2.9	2.6	2.4	2.2	2	1.9
		<b>LPH</b>	1454	1170	984	840	738	662	598	534	492	454	424
		<b>LPM</b>	24.25	19.5	16.4	14	12.3	11	10	8.9	8.2	7.6	7
160,000	96%	<b>GPH</b>	470	378	317	271	238	213	192	173	159	147	137
		<b>GPM</b>	7.8	6.3	5.3	4.5	4	3.6	3.2	2.9	2.7	2.5	2.3
		<b>LPH</b>	1779	1431	1200	1026	901	806	727	655	602	556	519
		<b>LPM</b>	29.7	23.9	20	17.1	15	13.4	12.1	10.9	10	9.3	8.7
199,000	96%	<b>GPH</b>	582	468	392	335	294	263	237	213	196	181	169
		<b>GPM</b>	9.7	7.8	6.5	5.6	4.9	4.4	4	3.6	3.3	3	2.8
		<b>LPH</b>	2203	1772	1484	1268	1113	996	897	806	742	685	640
		<b>LPM</b>	36.7	29.5	24.7	21.1	18.6	16.6	15	13.4	12.4	11.4	10.7

Recovery on rating plate is based at 94% thermal efficiency at 70° Fahrenheit rise, as required by ANSI