



# Westinghouse

## 316L Stainless Steel Residential Electric Water Heater

INDUSTRY BEST  
**6 Year, 9 year &  
LIFETIME**  
WARRANTIES

Available When Registered Online

40 & 52  
Gallon Tanks



Made in the USA



No Anode  
Rods Needed

Lightweight  
and Durable

BUILT  
TO LAST  
LONGER

[www.westinghousewaterheating.com](http://www.westinghousewaterheating.com)





# 316L Stainless Steel Electric Water Heater

## THERMOSTAT AND HIGH LIMIT CONTROLS:

Residential temp: min 110°F max 150°F

## HOT WATER CONNECTION:

Outlet connection on the top of the tank (with built in Heat Traps)

## THE FINEST PROTECTION:

Laser welded through a concentrated heat source producing high quality, long lasting, 316L stainless steel tank construction (lightweight) - Superior corrosion resistance, eliminates the need for anode rods, protects against harsh water conditions for a lifetime of durability against leaks - Fantastic Limited Warranty

## MINIMAL HEAT LOSS:

Heavy-duty insulation

## TITANIUM ELEMENTS:

Low watt operation; Titanium screw plugs; Increases corrosion resistance for extended, longer element life



## STANDARD FEATURES

- 316L Stainless Steel Tank
- Heavy Duty Insulation
- 2 Titanium Elements
- Electrical Connection Box
- Limited 8 Year, 12 Year or Lifetime Residential Warranty Options (When registered online) for Residential Unit

## IN THE BOX

- T & P Relief Valve
- Installation Manual
- Brass Full Port Drain Valve

No Anode Rods Needed  
Thermal Watt  
Low Density  
Titanium Elements  
Lightweight  
Resists Scale Build-Up

## THE WESTINGHOUSE ELECTRIC: STAINLESS STEEL WATER HEATER

The Westinghouse Electric Water Heater combines high quality stainless steel construction and energy efficient operation, providing long draws of hot water without consuming large amounts of energy. A cleverly designed water connection directs cold water to the heating element near the bottom of the tank to minimize the mixing of cold and hot water. Durable components, low standby heat losses, high recovery rates, and the industry's strongest warranty make the Westinghouse Electric Water Heater an ideal choice for electric water heating needs.

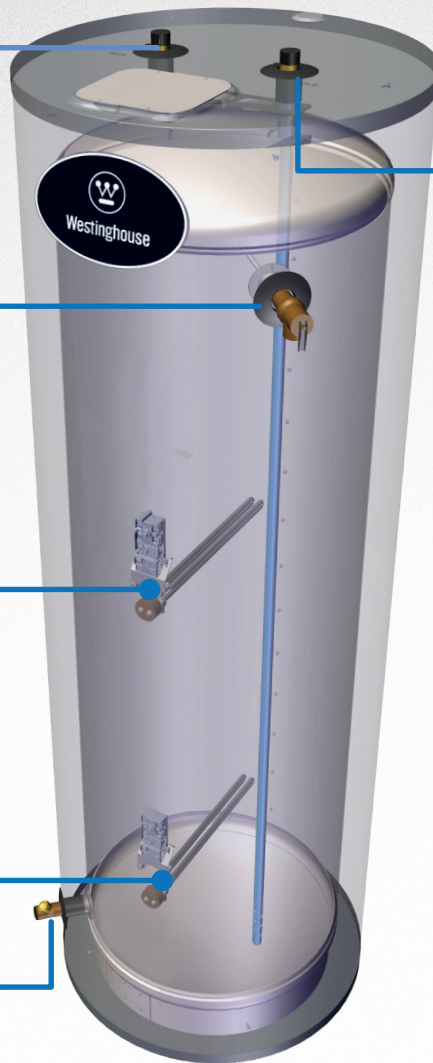


Hot  
Outlet

T&P Valve  
Alternate  
Hot Outlet

Two  
Titanium  
Elements

Drain



## A Closer Look

Cold  
Inlet

The Inlet & Outlet have Built in Heat Traps, Keeping the Heat in the Tank for Greater Efficiency

## 316L Stainless Steel Tank

### Our Components are Made of Durable Materials:

Inlet & Outlet  
Constructed of  
Durable Brass

Highest Quality  
Titanium Elements

High Grade  
316 L Stainless Steel  
Tank Construction

### The Advantages

#### Stainless Steel VS Glass-Lined



Westinghouse's  
Stainless Steel Tank  
Lightweight

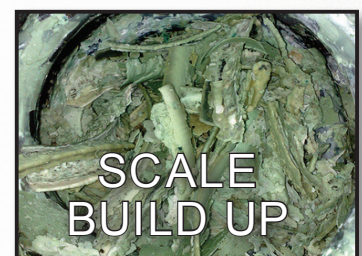


Top Competitor's  
Glass-lined Tank  
Very Heavy

Minimizes Scale Build Up  
Prolongs Tank Life  
No Need for Anode Rods  
Lightweight Construction

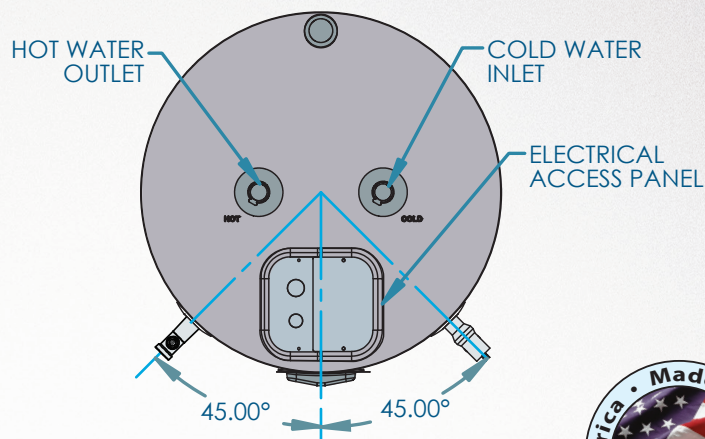
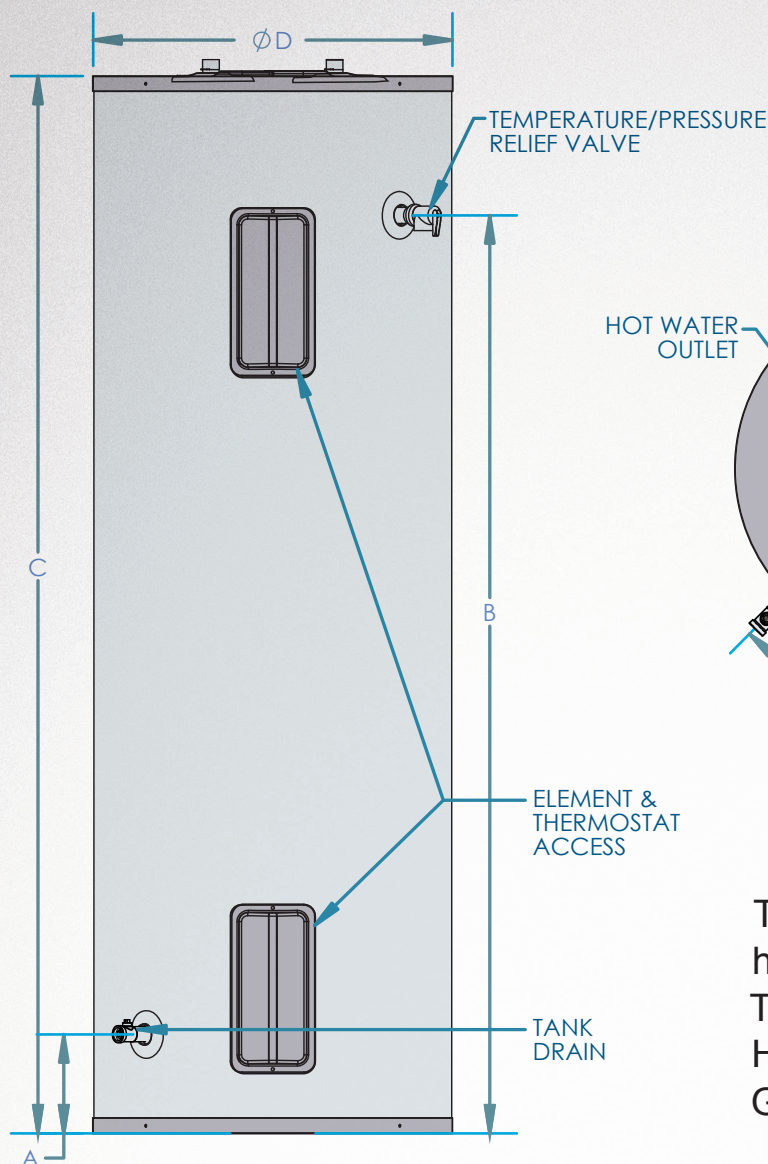
### NO Anode Rods Needed!

All coated tanks require anodes to delay the inevitable corrosion and tank failure. The average residential water heater lasts about 13 years. The Westinghouse stainless steel tanks will outlast any coated steel tank in the market.





# Dimensions & Specifications



The Inlet & Outlet have Built in Heat Traps, Keeping the Heat in the Tank for Greater Efficiency

No Anode Rods Needed  
Thermal Watt  
Low Density  
Titanium Elements  
Lightweight  
Resists Scale Build-Up

SPECIFICATIONS AND DIMENSIONS							WATER TEMPERATURE RATINGS		
Models	Nominal Gallon	DOE Rated Storage Vol. (Gal)	A	B	C	D	Minimum Delivered Temp.	Maximum Delivered Temp.	High Temp. Limit
WER040C2X045*	40	39	5.75"	46"	54.25"	19.5"	110°F 43.3°C	150°F 65.5°C	170°F 76.6°C
WER040C2X055*									
WER052C2X045*	52	48	5.75"	58.25"	66.75"	19.5"			
WER052C2X055*									

Residential Models	Wattage	Voltage	Safety Listing	AHRI First Hour Rating	First Hour Bin	Recovery Efficiency	Recovery @ 90° F Rise	UEF/EF	Shipping Weight
WER040C2X045*	4500	240	UL174	58 Gallons	Medium	98%	20 Gallons	.94 /.95	104 lbs
WER040C2X055*	5500			58 Gallons			25 Gallons		
WER052C2X045*	4500	240		62 Gallons	Medium	98%	20 Gallons	.93 /.94	118 lbs
WER052C2X055*	5500			62 Gallons			25 Gallons		

\* Add a "N06" or a "N09" to the end of the model number for 6 and 9 year warranty options.

Energy Factor based on D.O.E. (Department of Energy) test procedures. Heaters furnished with standard 240 volt AC, single phase non-simultaneous wiring.

©, WESTINGHOUSE are trademarks of Westinghouse Electric Corporation. Used under license by HTP, Inc. All Rights Reserved. © 01/2019