



High Mass Condensing Boiler

Superior Construction:
Stainless Steel
Titanium Blend

Stainless Steel AISI 316 Ti

Manufactured out of this extremely
durable stainless steel and titanium blend

Up to 1,000,000 Btuh

Up to 93% Thermal Efficiency

Superior Heat Transfer

The reverse flame combustion chamber
heats large amounts of hot water

Cascade up to 8 Boilers
(with boiler rotation)

Mod/Bus interface for easy BMS system

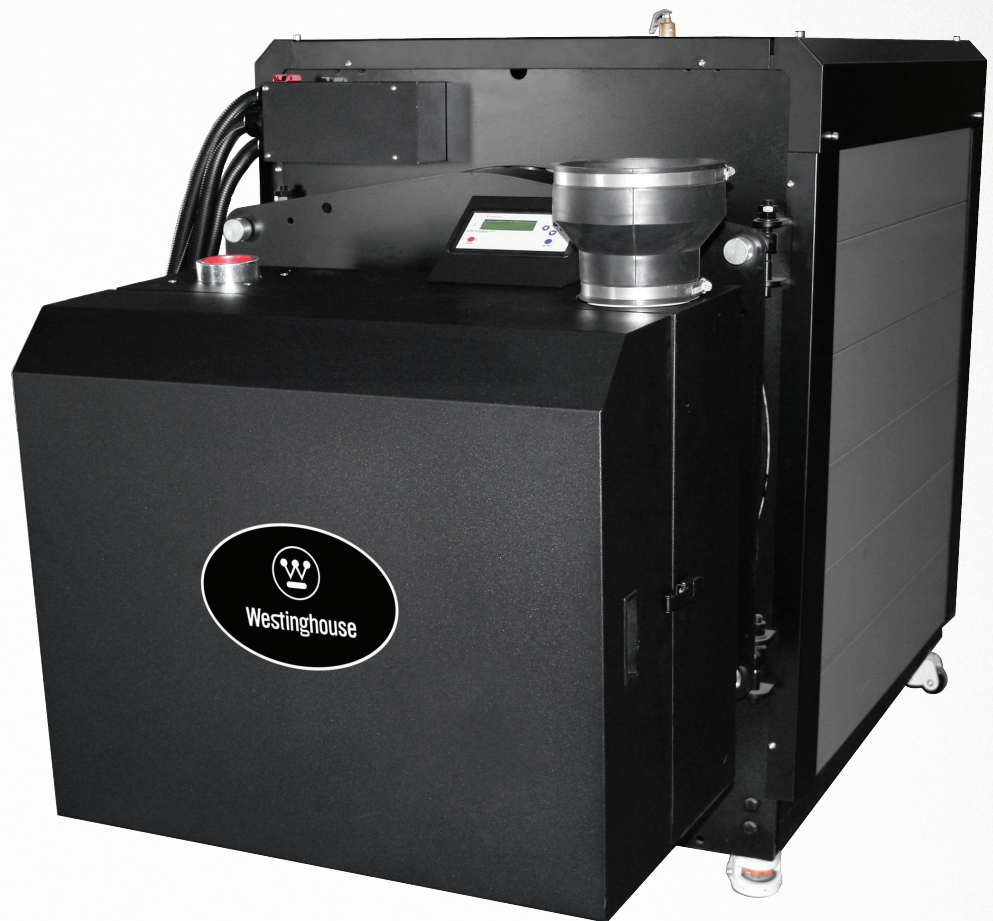
Small Footprint

Will fit through a standard door opening
Caster wheels on the bottom of the boiler

CSD Compliant

Direct Flow or Primary
Secondary Piping Options

10:1 Turndown Ratio



One of a Kind Design from the Inside, Out!

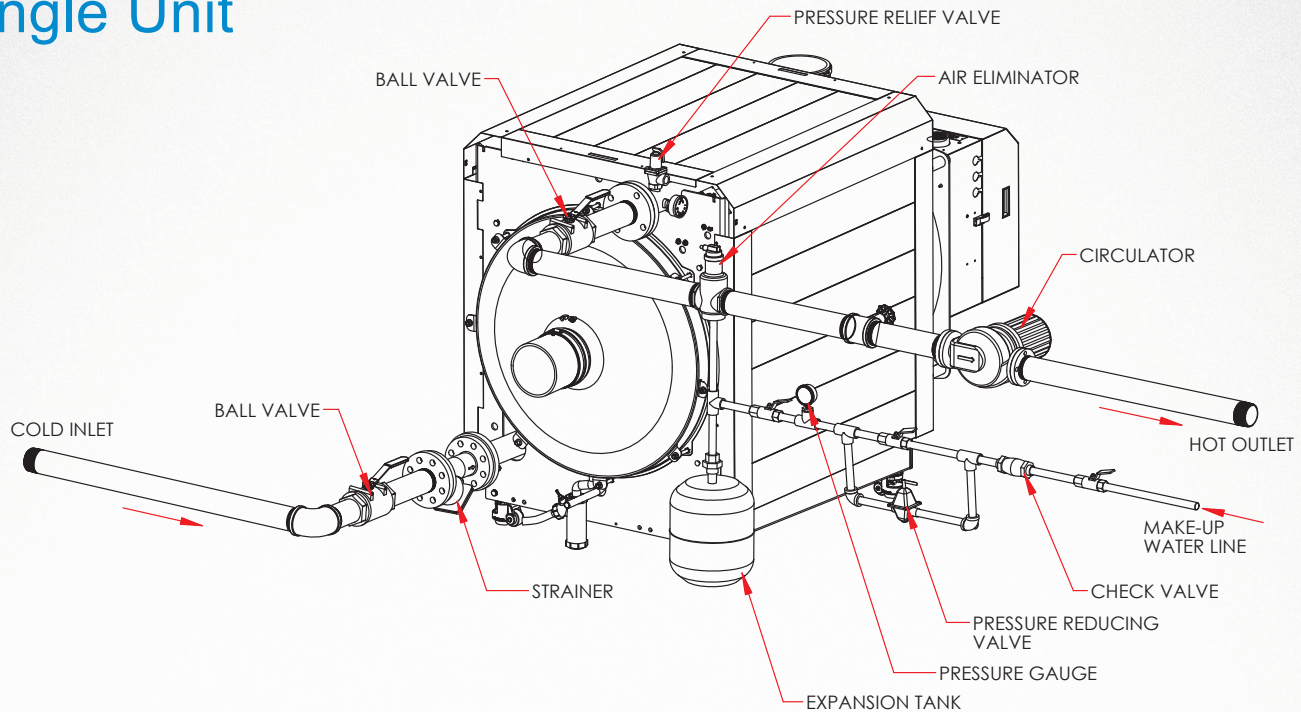
High Mass Condensing Boiler

Eliminates the Need for Primary–Secondary Piping

With 10: 1 Modulation, Large Water Content Heat Exchanger with Virtually No Pressure drop (Under 2 feet of resistance at a 100 GPM Flow) Cascade up to 8 Boilers

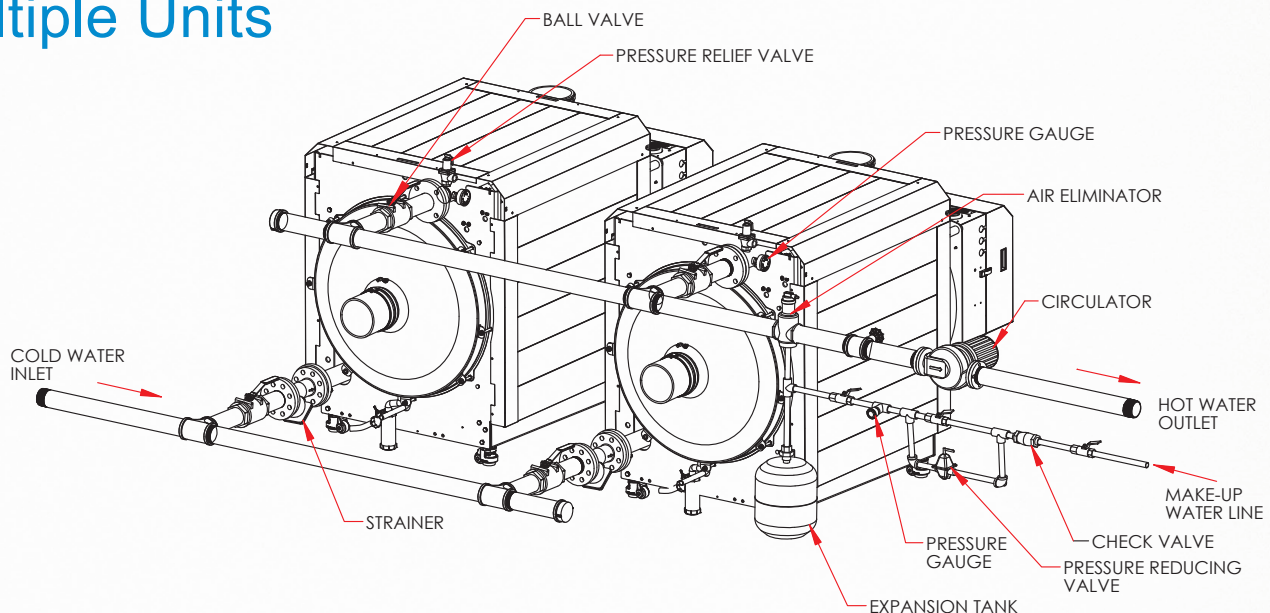
Direct Flow Piping Configuration

Single Unit



Direct Flow Piping Configuration

Multiple Units



High Mass Condensing Boiler

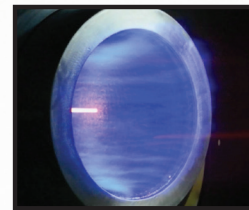
Optional Equipment

- System Sensor (7250P-324)
- Indirect Tank Sensor (7250P-325)
- High and Low Gas Pressure Switch Kit with Manual Reset (6300P-991)
- 6" Stainless Steel Outside Termination Vent Kit (V3000)
- Flow Switch Kit (6300P-990)
- Manual Reset High Temperature Limit (6300P-998)
- Alarm System (to monitor any failure) (7350P-602)
- 928 PC Connection Kit with Software (7450P-330)
- Condensate Neutralizer (7350P-611)

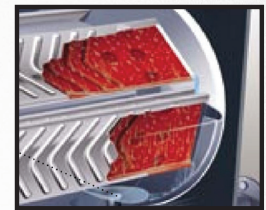
Additional Features

- Superior condensate collection system
- 10 year limited warranty
- Vents in PVC - CPVC - stainless steel – up to 140 equivalent feet (combined intake and exhaust)
- Built-in UL-353 Approved Low Water Cut-Off
- Field wiring connection board / Cascade wiring CAT 3 or 5
- Adjustable leveling
- Dry contact for alarm output
- Blocked vent pressure switch
- Pressure and temperature gauge

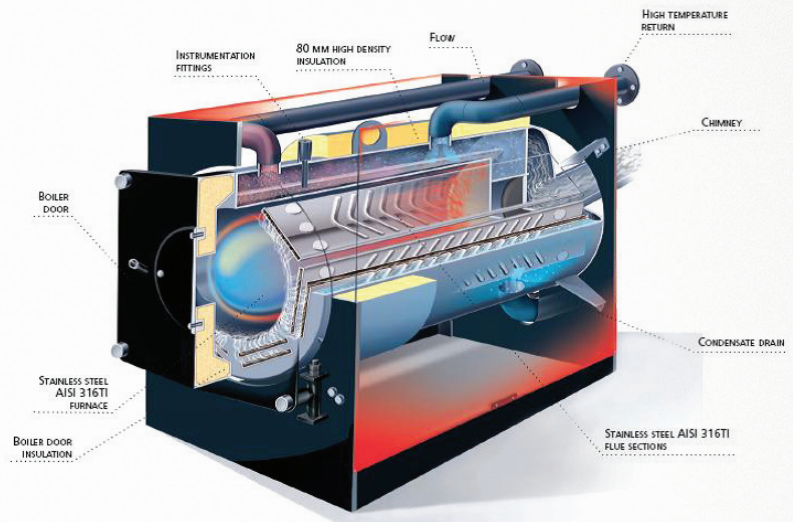
1,000,000 & 750,000
Btuh Models
Up to 93%
Thermal Efficiency



The Hyper-Jet Combustion System with Modulating Inward Firing Burner



Corrugated Horizontal Flue Passages: Special surface increases heat exchange area for higher efficiencies



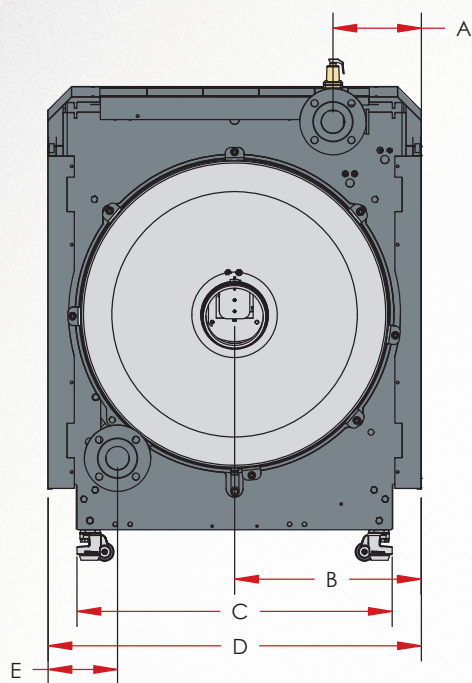
Models	Btuh	Net Ratings (Water)	Turndown Ratio	Supply & Return Pipe Size	Gas Line Connection	Thermal Efficiency	Vent Diameter	Approx. Shipping Weight
WBCETNG750	750,000	608 Mbh	10 : 1	2"	2"	93.2%	6"	850 LBS
WBCETNG1000	1,000,000	804 Mbh	10 : 1	2.5"	2"	92.5%	6"	950 LBS

Dimensions

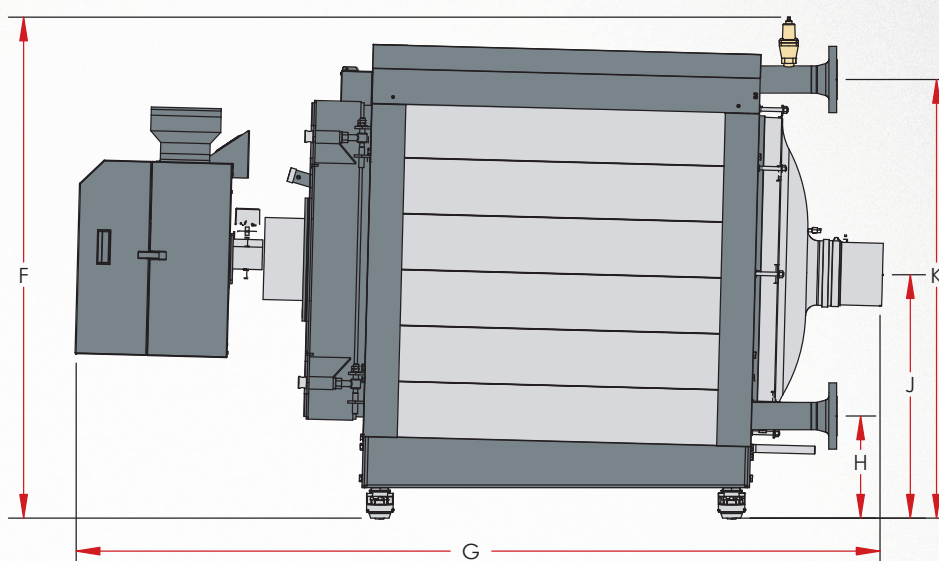
Models	Btuh	Net Ratings (Water)	Turndown Ratio	Supply & Return Pipe Size	Gas Line Connection	Thermal Efficiency	Vent Diameter	Approx. Shipping Weight
WBCETNG750	750,000	608 Mbh	10 : 1	2"	2"	93.2%	6"	850 LBS
WBCETNG1000	1,000,000	804 Mbh	10 : 1	2.5"	2"	92.5%	6"	950 LBS

Models	A	B	C	D	E	F	G	H	J	K	L	M
WBCETNG750	8.5"	16.5"	30.75"	32.75"	8.5"	49"	83"	8.25"	25"	43"	6.25"	13.75"
WBCETNG1000	9.25"	19.75"	36.25"	39.5"	7.25"	53"	85"	10.75"	25.75"	46.25"	6.25"	13.75"

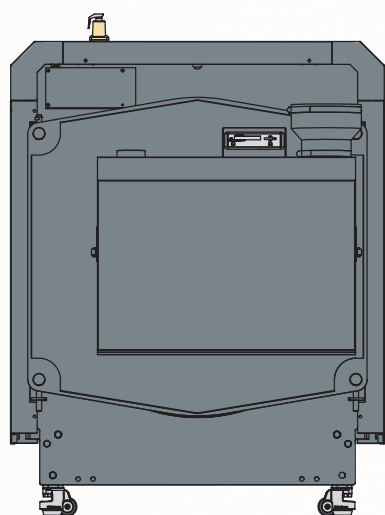
PLEASE NOTE: ALL DIMENSIONS ARE PRELIMINARY AND APPROXIMATE



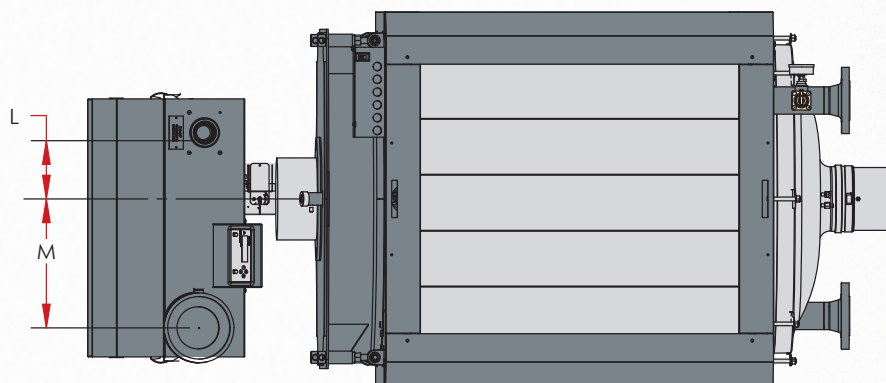
REAR VIEW



SIDE VIEW



FRONT VIEW



TOP VIEW