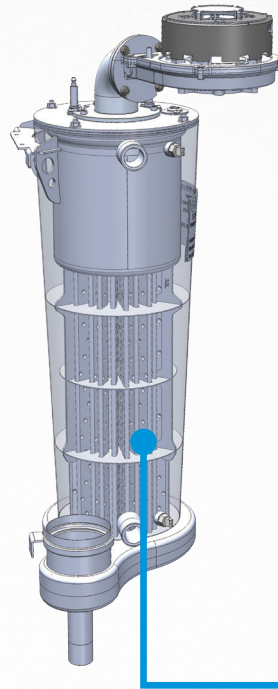




Westinghouse

High Efficiency Fire Tube Boiler



Durable Stainless Steel Fire Tube Heat Exchanger with Excellent Heat Transfer Properties

Up to 10 to 1 Combustion Turndown Ratio Allows
the Appliance to Match Energy Usage to Demand

Energy Star Rated: up to 96.8%
AFUE Operating Efficiency

Unbeatable Combined Vent Length
of 200 ft. in 3" PVC Pipe

12 Year Limited Warranty;
3 Years Blower Motor



**Most Efficient
2018**

www.energystar.gov

A CLOSER LOOK (155,000, 285,000 & 399,000 Btuh Models)

(Top connections not available for 55,000, 80,000 & 100,000 Btuh models)

Alternate Top Return

Alternate Top Supply

Modulating Combustion Blower Assembly

Sealed Electronic Enclosure (Moisture & Corrosion Resistant)

2 Line 40 Character LCD Display - Program & Monitor Boiler Operation



Alternate Bottom Return

Alternate Bottom Supply

Exhaust Vent Connection

Intake Vent Connection

Easily Removable Cover

Spark Ignition System with Flame Monitoring

Stainless Steel Fire Tube Heat Exchanger

Integrated Digital Control

Field Connection Board

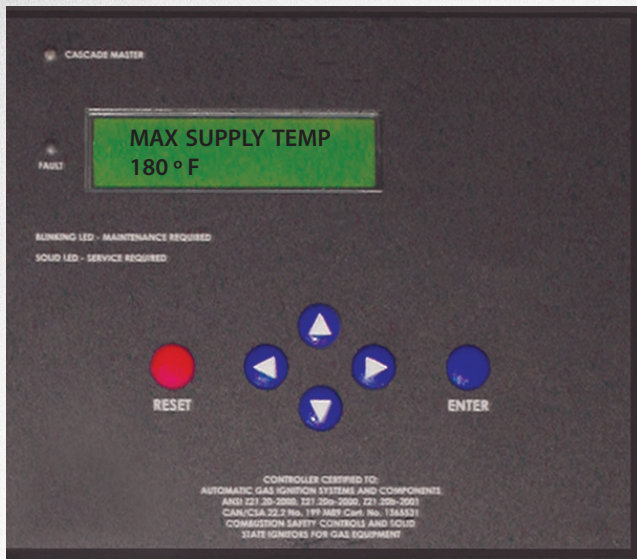
Negative Regulation Gas Valve

Condensate System

Extremely Durable and Reliable
Minimal Maintenance Required



CONTROL INTERFACE



Total System Control

Outdoor Reset: a sensor measures the outside air temperature and adjusts the boiler set point to increase comfort and efficiency

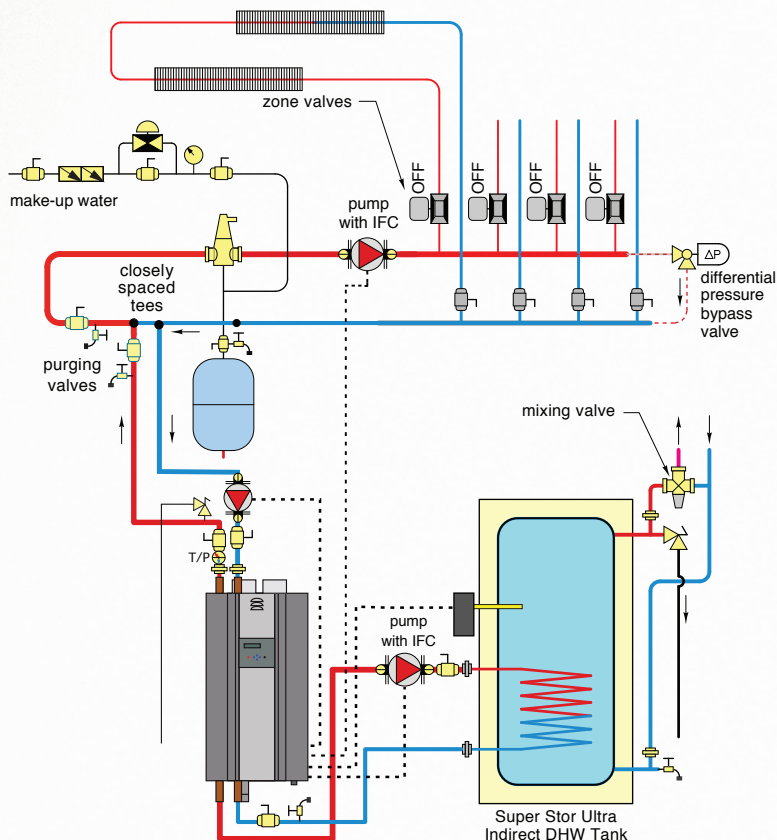
Indirect water heater integration

Adjustable system freeze protection parameters

Ability to review boiler history

ModBus capability, and more....

INSTALLATION



Versatility

6 models available: 55,000, to 399,000 Btuh

Top and Bottom piping connections (available only for models 155,000, 285,000 & 399,000 Btuh)

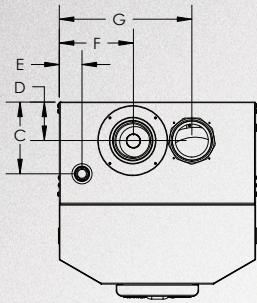
Convertible from Natural to LP gas

Wall hung for space savings

No primary / secondary piping required on units with 55,000, 80,000 or 110,000 Btuh (minimum flow must be met)

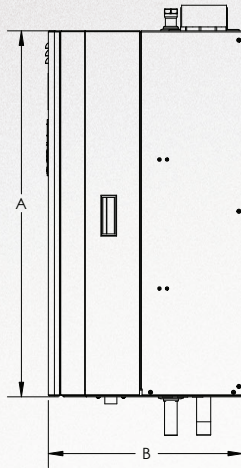
Cascade up to 8 boilers - linked and sequenced to function together for commercial installations

SPECIFICATIONS

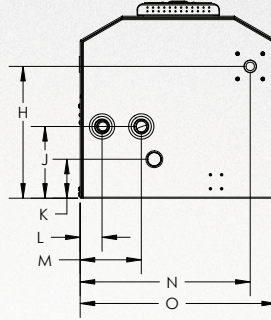


**Models: 55,000
80,000 & 110,000 Btuh**

Top View



Side View



Bottom View

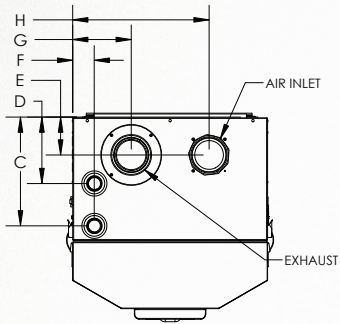
STANDARD FEATURES

- Up to 96.8% AFUE
- Modulating Burner
 - 5:1 Turndown ratio (55-155 Models)
 - 10:1 Turndown ratio (285 & 399 Models)
- Venting Options
 - Concentric
 - 3" Pipe: Balanced or Unbalanced
- Limited 12 Year Warranty
- Wall Mounted
- Total System Control
- The Elite FT is ASME Certified

INCLUDED IN THE BOX

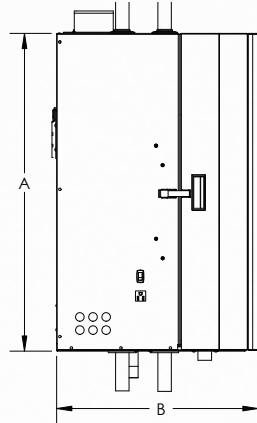
- Temperature and Pressure Gauge
- Pressure Relief Valve 30 PSI (80 psi for EFT-285 & EFT-399 Models)
- Indirect Sensor & Outdoor Sensor
- Intake PVC w/ Screens
- Exhaust PVC Coupling w/ Screens
- Installation Manual
- Warranty
- Condensation Removal System
- Wall Mount

Model	Max. MBH	Min. MBH	AFUE	Heating Capacity MBH	A	B	C	D	E	F	G	H	J	K	L	M	N	O
WBRNG055WPU	55	13	96.8	51	32 1/2"	17 3/8"	6 1/4"	3 1/2"	2 1/4"	6 1/2"	11 3/4"	12 1/2"	6 1/4"	3 1/2"	2"	5 1/2"	15"	17 1/2"
WBRNG080WPU	80	17	96	79														
WBRNG110WPU	110	22	95.6	102														

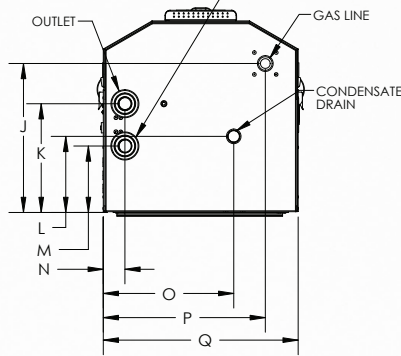


**Models: 155,000,
285,000 & 399,000 Btuh**

Top View



Side View



Bottom View

OPTIONAL EQUIPMENT

- ModBus Adapter
- 3", 4", 6" Stainless Steel Outside Termination Vent Kit
- 3" Concentric Vent Kit
- 3" Polypro Vent Kit
- 3" Polypro Pipe
- U.L. 353 Compliant Low Water Cutoff w/ Manual Reset
- Alarm System to Monitor Failures
- PC Connection Kit
- Condensate Neutralizer
- System Sensor
- 3 Speed Pump with integrated Flow Check
- LP Conversion Kit

Model	Max. MBH	Min. MBH	AFUE	Net Ratings (water)	Heating Capacity MBH	A	B	C	D	E	F	G	H	J	K	L	M	N	O	P	Q
WBRNG155WPU	155	31	95.5	-	142	32 5/8"	20 5/8"	11 1/8"	6 7/8"	3 7/8"	2 1/4"	6"	14"	15 1/4"	11 1/8"	7 3/4"	6 7/8"	2 1/4"	13 3/8"	16 5/8"	20"
WBRNG285WPU	285	28.5	95.1	-	262																
WBCNG399WPU*	399	39.9	97.1*	323 Mbh	367	36 3/8"	23 5/8"	13 5/8"	8 1/2"	4 3/4"	2 3/4"	7 3/8"	18 1/8"	18 3/4"	13 5/8"	9 3/4"	8 1/2"	2 3/4"	16 1/2"	19 1/4"	25 1/2"

* Thermal Efficiency (Not AFUE)

Model	BTU	Turndown Ratio	Shipping Weight	Gas Conn.	Water Conn.	Air Inlet	Vent Size
WBRNG055WPU	55,000	5 : 1	125 lbs.	3/4 "	1"	3"	3"
WBRNG080WPU	80,000	5 : 1	128 lbs.				
WBRNG110WPU	110,000	5 : 1	130 lbs.				
WBRNG155WPU	155,000	5 : 1	195 lbs.		1 1/4		
WBRNG285WPU	285,000	10 : 1	203 lbs.				
WBCNG399WPU	399,000	10 : 1	298 lbs.		1 1/2"	4"	4"



**Most Efficient
2018**
www.energystar.gov

®, WESTINGHOUSE are trademarks of Westinghouse Electric Corporation. Used under license by HTP Comfort Solutions LLC. All Rights Reserved.

MKTLIT-XX - 04 / 2018