



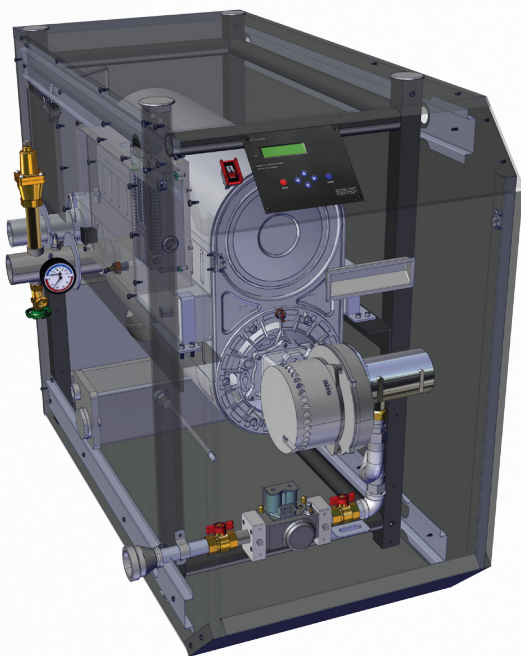
# Highly Efficient **Commercial** Gas Fired Boiler

Up to  
**10 : 1**

Turndown Ratio

Up to **1,700,005 Btuh**

ASME Stainless Steel  
Heat Exchanger



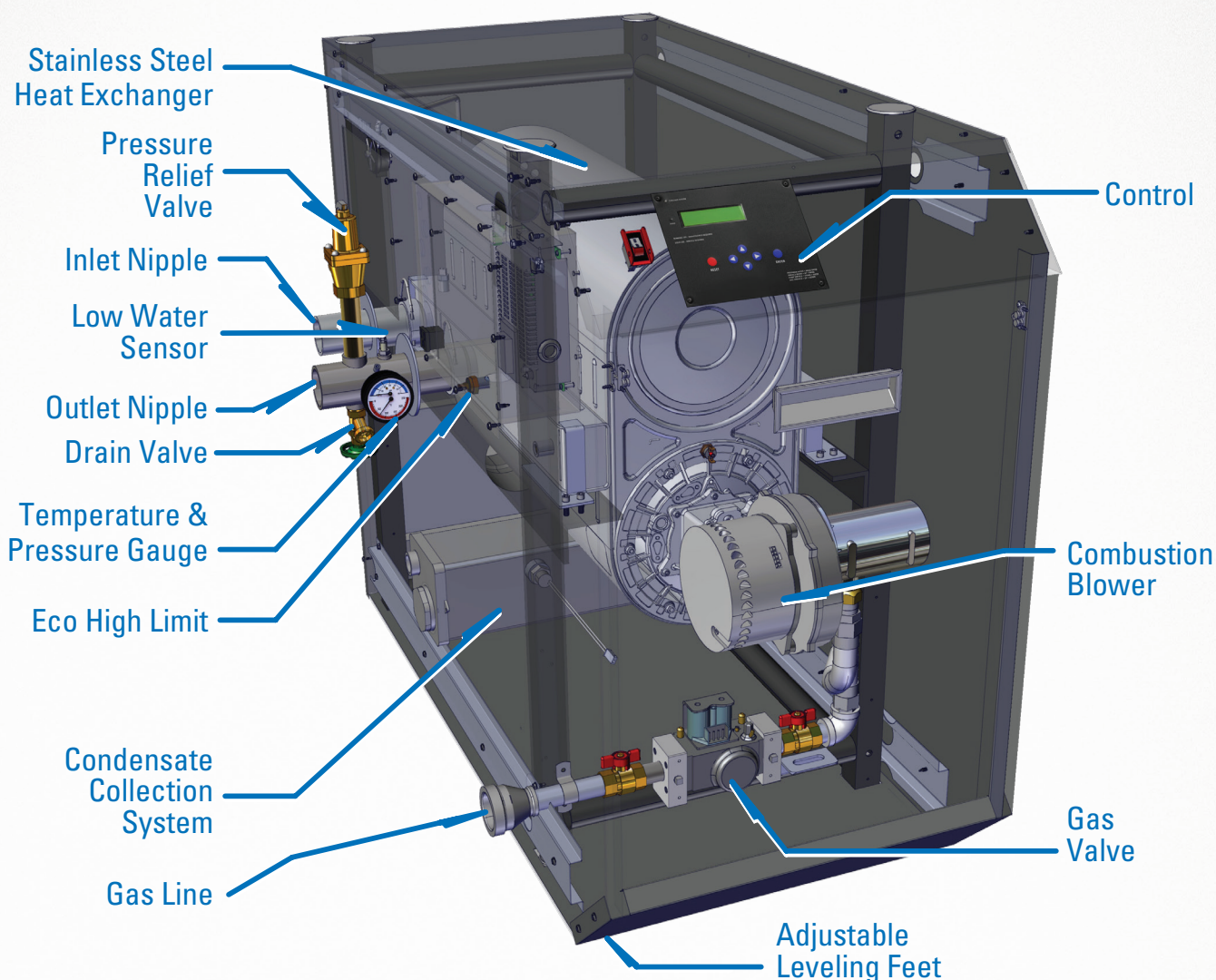
1,000k & 1,700k Btuh units are double stacked  
500k, 700k & 850k Btuh units are single boilers



Ultra High up to  
**98% Efficiency**



Model	Btuh Input Range	Gross Output Btuh	Net Ratings (water) Mbh	Thermal Efficiency	# Cascade Units	Supply/Return Conn.	Gas Conn.	Vent Dia.	Turndown Ratio	Est. Ship Weight	Combined Vent Length
WBCMC**500	100,000-500,000	470,000	409	94%	up to 8 (8EXs)	2"	1.5"	4"	5 to 1	505 lbs.	up to 200 ft.
WBCMC**700	170,000-700,000	686,000	597	98%	up to 8 (8EXs)	2"	2"	6"	5 to 1	580 lbs.	up to 200 ft.
WBCMC**850	170,000-850,005	799,000	695	94%	up to 8 (8EXs)	2"	2"	6"	5 to 1	580 lbs.	up to 200 ft.
WBCMC**1000	100,000-1,000,000	940,000	818	94%	up to 4 (8EXs)	3"	2"	6"	10 to 1	1010 lbs.	up to 150 ft.
WBCMC**1700	170,000-1,700,005	1,600,000	1,390	94%	up to 4 (8EXs)	3"	2.5"	8"	10 to 1	1160 lbs.	up to 150 ft.





## Combustion System

- up to 98% Thermal Efficiency
- Modulating Burners: up to 5:1 Turndown (500k, 700k & 850k Btuh units) & a 10:1 Turndown Ratio (1,000k & 1,700k Btuh Units)
- Whisper Quiet Operation
- Low NOx Operation
- High Grade Inconel Burner
- Reliable Spark Ignition
- Gas Valve (Tested to UL, FM, CSA Standards)
- Built in Redundancy (1,000k & 1,700k Btuh Units)

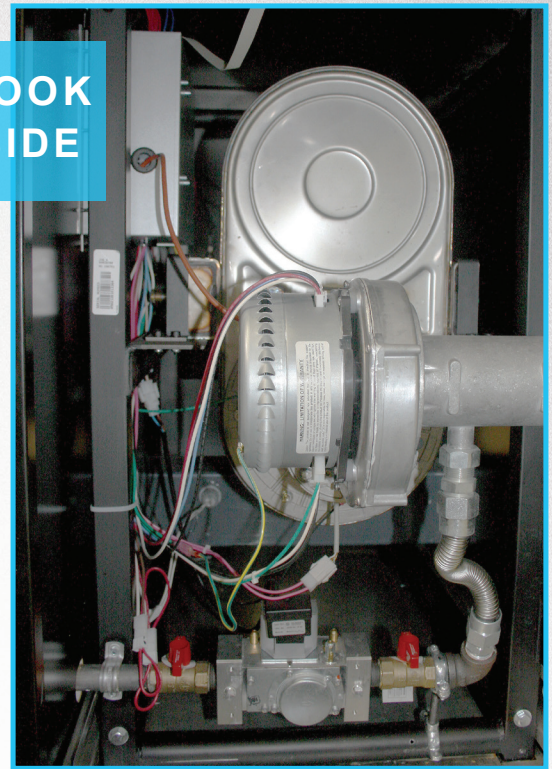
## Heat Exchanger

- All Stainless Steel Construction
- No Gaskets, Welded Construction ASME Approved
- 150 PSI Relief Rated
- Easy to Service

## Integrated Control System

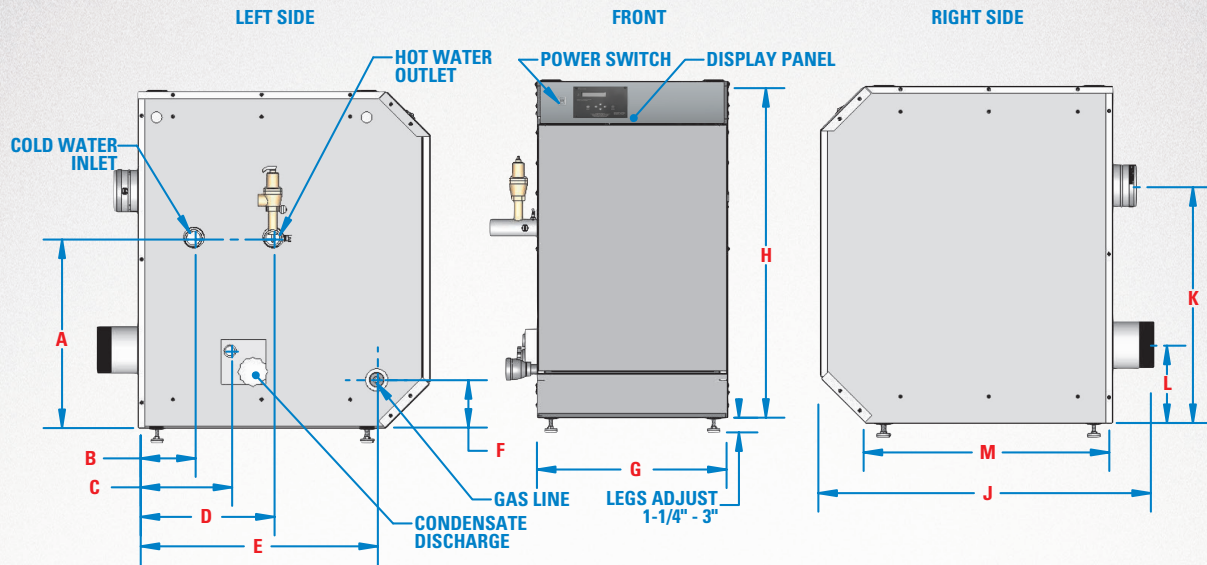
- Built-In Sequencer for up to 8 Boilers
- Digital Display with LED Status Indicators
- Integrated Control Allows Only the Amount of Heated Energy Required
- Outdoor Sensing with Indirect Priority Allows for Greater Energy Savings and Comfort
- Built-In Low Water Cut Off with Additional Manual Reset High Limit Switch
- Multiple Pump Outputs
  - Boiler Pump
  - System Pump
  - Indirect Pump
- 24 Volt Monitor - System Safeties
- Dual Flame Sensing (Flame Probe / Spark Ignition Probe)

A LOOK  
INSIDE





Model	A	B	C	D	E	F	G	H	J	K	L	M
WBCMC**500	20"	6.25"	13.25"	14.5"	33.25"	5.25"	20.5"	36"	46"	25.5"	8.25"	34"
WBCMC**700	20"	6.25"	16.25"	18.75"	43.5"	20"	20.5"	36"	67.75"	25.5"	8.25"	57.5"
WBCMC**850	20"	6.25"	16.25"	18.75"	43.5"	20"	20.5"	36"	67.75"	25.5"	8.25"	57.5"



Model	A	B	C	D	E	F	G	H	J	K	L	M	N	O
WBCMC**1000	72.5"	20.5"	36"	13.75"	8.375"	46"	6"	13.625"	14.5"	33.25"	43.75"	66.75"	63.25"	43.375"
WBCMC**1700	72.5"	20.5"	36"	13.75"	8.375"	64.5"	8.25"	20"	18.75"	43.5"	62.375"	88.50"	63.25"	59"

