



Westinghouse

Tankless Water Heater & Space Heating Appliance



140K & 199K Btuh Units

Stainless Steel, Fire Tube Heat Exchanger

Turndown Ratio up to 10:1

Advanced Modulating Gas Condensing Boiler: Up to 96% AFUE

Built-in 2 Gallon Indirect Stainless Steel Tank

Universal Piping Location: Installer Connection Can Easily be Moved from Left to Right Side of the Unit

3.2 GPM Flow Rate
@ 77° Rise (UFTC-140F)

4.8 GPM Flow Rate
@ 77° Rise (UFTC-199F)

Venting: 2" or 3" PVC, CPVC or Polypropylene



Floor & Wall Units



www.westinghousewaterheating.com

Save Energy • Save Money • Save Space • Save On Installation

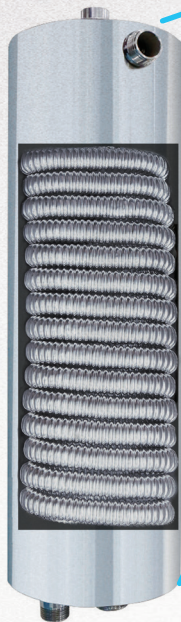
Intake

**Automatic
Air Vent**

**Modulating
Gas Valve**

**DHW Heat
Exchanger**

- Premium grade stainless steel
- Minimizes calcium deposits
- Sufficient hot water flow
- Instantaneous Response

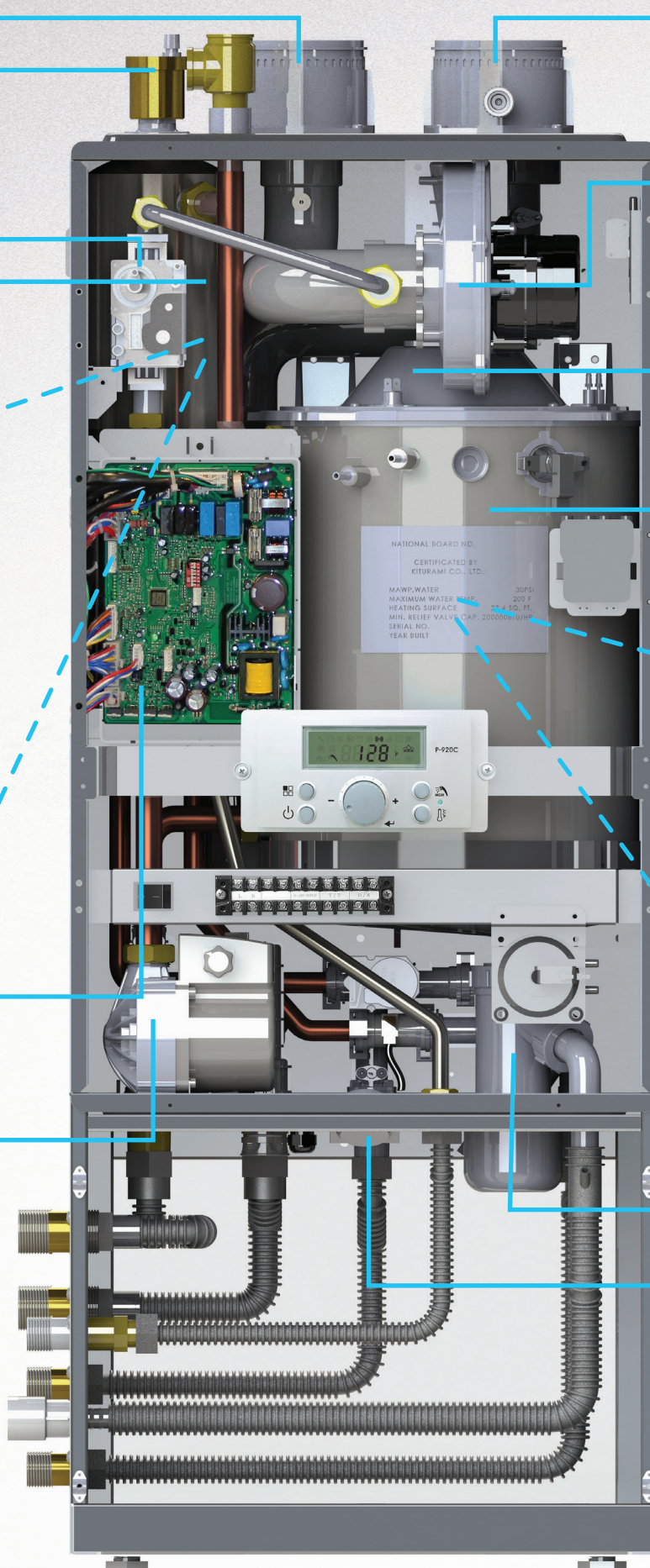


Main Control

- Multiple safety functions
- Built in dual stage anti-freezing mechanism

**Built-In Threeway
Valve and High
Efficiency Pump**

Optimizes overall efficiency



Exhaust

Turbo Fan

Modulating fan provides significant power for long vent runs

Ceramic Fiber Burner

The Eco Pre-Mixed burner offers high combustion efficiency and low CO and NOx emissions

Heat Exchanger

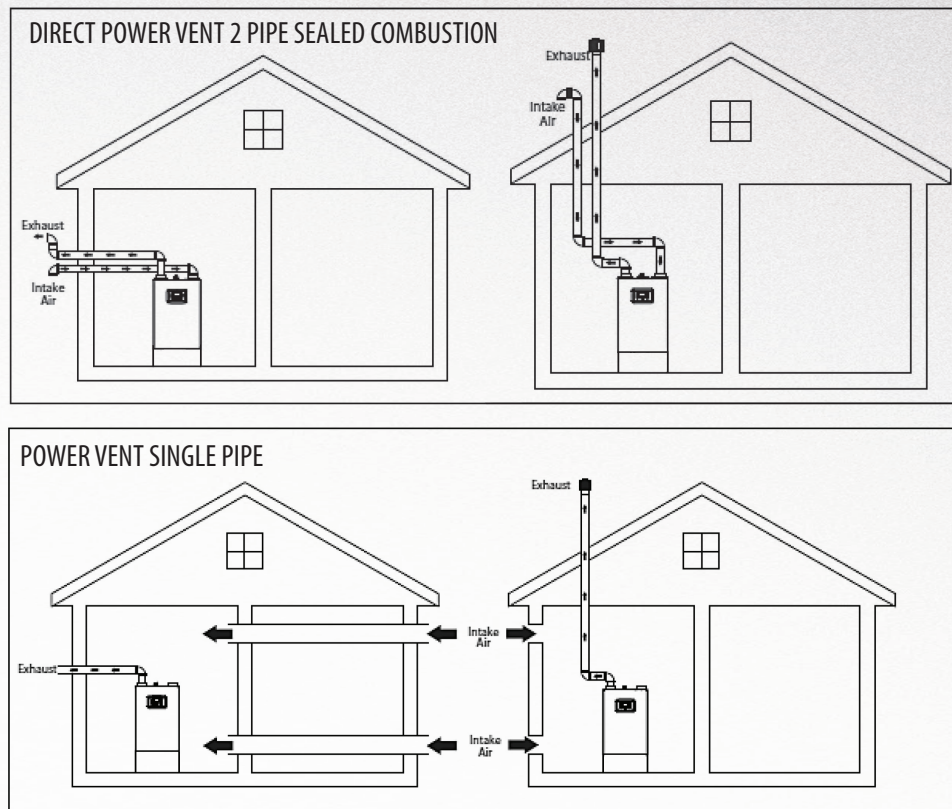
- Hi-fin heat exchanger
- Higher efficiency
- Lower pressure drop
- Compact storage size



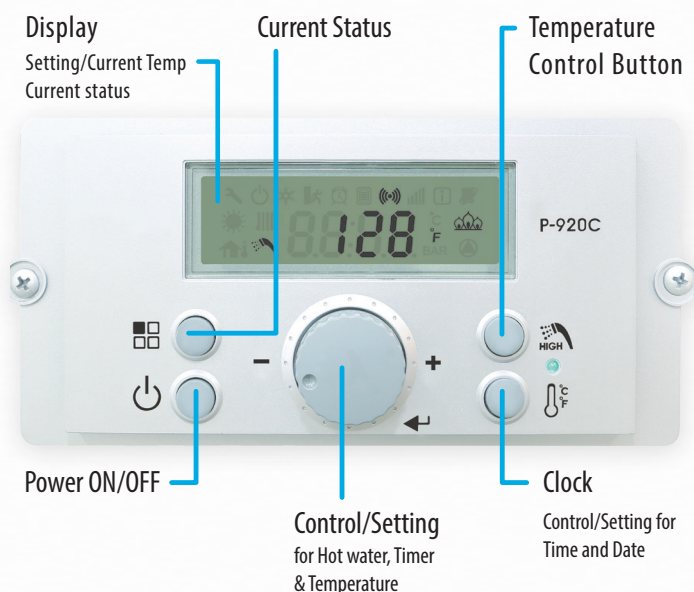
Condensate Trap

CH Pressure Gauge

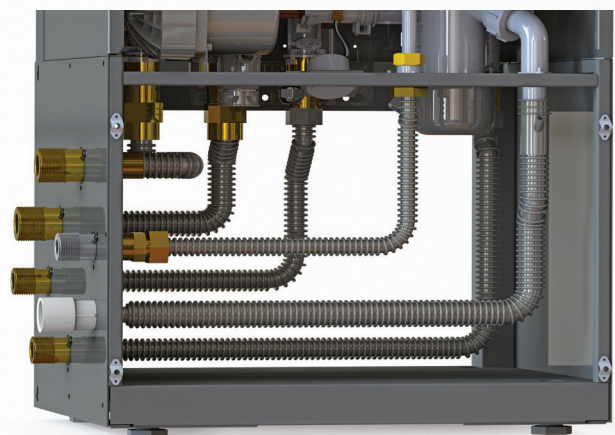
MULTIPLE VENTING CONFIGURATIONS



MULTIFUNCTION CONTROL PANEL

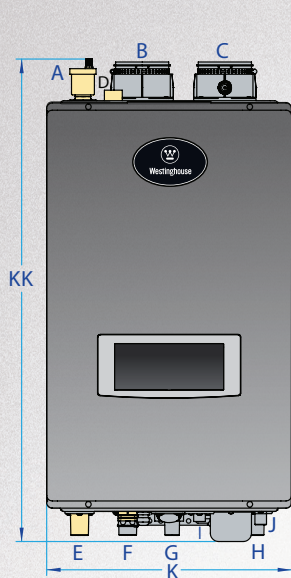


CONNECTIONS

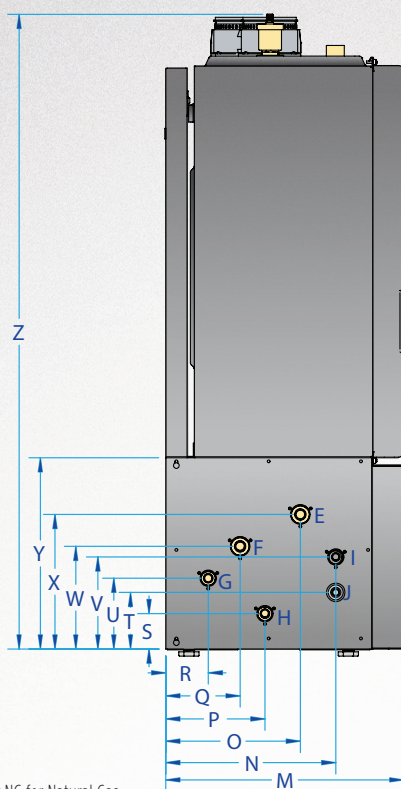


Domestic Inlet/Outlet	3/4" NPT
Boiler Inlet/Outlet	1" NPT
Gas Inlet	1/2 & 3/4" NPT
Condensate Drain	3/4" PVC

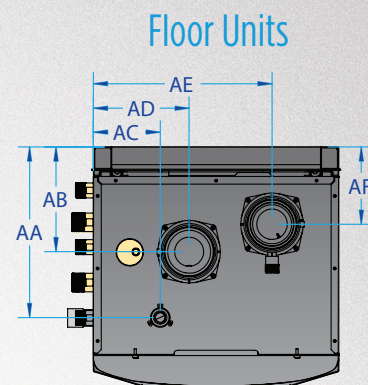
All the bottom connections (Boiler Outlet & Inlet / Domestic Outlet & Inlet / Condensation / Gas) can be located on either side of the boiler (Left or Right) to make installation easier.
Note: Fittings are shipped on left side of the boiler.



Wall Units



Floor Units



Floor Units



Replace ** with LP for Liquid Propane or NG for Natural Gas

The models that end with a **W** are **Wall Units** & the models that end with a **F** are **Floor Units**

Tankless Water Heater & Space Heating Appliance		
	DESCRIPTION	DIAMETER
A	AUTOMATIC AIR VENT	-
B	INTAKE PIPE CONNECTION	3"
C	EXHAUST PIPE CONNECTION	3"
D	PRESSURE RELIEF VALVE ADAPTER	3/4" NPTF
E	CH SUPPLY ADAPTER	1" NPT
F	CH RETURN ADAPTER	1" NPT
G	DHW OUTLET ADAPTER	3/4" NPT
H	DHW INLET ADAPTER	3/4" NPT
I	GAS CONNECTION ADAPTER	3/4" NPT
J	CONDENSATE ADAPTER	3/4" PVC

MODELS	K	KK	L	M	N	O	P	Q	R	S	T	U	V	W	X	Y	Z	AA	AB	AC	AD	AE	AF
WBRC**140W WBRC**140F	17.3	34	19.1	16.8	12	9.5	7	5.3	3	2.5	4	5	6.5	7.3	9.5	13.5	44.8	12	7.4	4.7	6.8	12.6	5.5
WBRC**199W WBRC**199F	19.7	37	21.5	18.2	12	9.5	7	5.3	3	2.5	4	5	6.5	7.3	9.5	13.5	48	14	8.5	3.2	9.2	15.1	5.2

Model		WBRC**140W / WBRUC**140F	WBRC**199W / WBRUC**199F
DHW Input	Natural Gas or Propane Gas	14,000 ~ 140,000 Btuh	19,000 ~ 199,000 Btuh
Boiler Input / AFUE		14,000 ~ 140,000 Btuh / 96	19,900 ~ 140,000 Btuh / 95.1
Floor Model Dimensions (W x H x D)		W 19" x H 45" x D 17"	W 22" x H 48" x D 18"
Wall Mount Model Dimensions (W x H x D)		W 17.3" x H 34" x D 15.4"	W 19.7" x H 37" x D 16.8"
Installation Type		Indoor, Wall Mounted Model or Floor Model, Fully Condensing	
Venting Type		Forced Draft Direct-Vent	
Venting: Combined Vent Length / Materials		2"(50ft), 3"(100ft) / CPVC, PVC, PP & Power Vent	
Ignition		Electronic Ignition	
Gas Supply Pressure	Natural Gas	3.5"W.C ~ 14"W.C	
	Propane Gas	3.5"W.C ~ 14"W.C	
Power Supply	Main Supply	AC 120V / 60Hz	
	Maximum Power Consumption	160W	
Flow Rate (DHW)	35°F (19°C) Temp Rise	7.1 gal/m	9.88 GPM
	45°F (25°C) Temp Rise	5.5 gal/m	7.7 GPM
	77°F (43°C) Temp Rise	3.2 gal/m	4.8 GPM
Water Pressure	Central Heating	15 min - 30 max PSI	
	Domestic Hot Water	15 min - 150 max PSI	
Connection Sizes	Cold Water Inlet / Hot Water Outlet	3/4" NPT	
	Boiler Inlet /Outlet	1" NPT	
	Gas Inlet	3/4" NPT	
Warranty		Limited 10 Year Residential Warranty	

©, WESTINGHOUSE are trademarks of Westinghouse Electric Corporation. Used under license by HTP, Inc. All Rights Reserved.